

century. It was sold in 1903 and became a flour mill and bakery until c. 1926. It was then bought back by the owner of the manor, and a turbine, which had been installed in place of one of the two wheels some years previously, was used to generate electricity for the estate. After the installation of mains electricity, the mill was used as a chicken house for many years. In 1972 the building was sold for conversion into a dwelling.

The mill building, which dates from the eighteenth century, is three storeys high and built of brick. The internal low breast-shot waterwheel measures 14ft. diameter by 3ft. 8in. wide. This wheel has been restored during the conversion of the building. The rest of the machinery, which has been removed, consisted of an iron pitwheel 10ft. in diameter, a 3ft. diameter iron wallower, and an 8ft. diameter wooden clasp arm spur wheel. There were two 22in. iron stone nuts. The upright shaft and the hurst frame were of wood. The second wheel was positioned at the other end of the building, being replaced by a turbine early in the twentieth century. Parts of this turbine are still in place.

155. FORGE MILL - RUIN CLIFFORD

SP 198528

There was a corn mill here by 1550. In about 1670 it was demolished and an iron forge built by Francis Watts. The iron was brought to the mill by barges on the River Avon. It was leased to Thomas Archer in the 1680's and continued to operate as a forge until the 1730's. After this time it seems to have reverted to corn grinding.

By 1830 the miller was Thomas Adams, and he is recorded until Smith and Averill took over the business in 1872. Richard Sydney Smith ran the mill from 1875 until 1904 after which time the business was known as R. S. Smith Ltd. The mill ceased working c. 1926, when it was bought by the owner of the manor at Clifford Chambers. In 1946 it was occupied by Tibor Furnishing Fabric Company, and was used as their research and design centre until 1977.

The existing buildings date from 1853 when the mill was totally rebuilt. It is a three storey brick building with a centrally placed lucam. A tall chimney stands nearby, being all that remains of a steam engine installed as auxiliary power. All the milling machinery, including the waterwheel and a turbine, was removed in 1946.

THE MILLS ON TRIBUTARIES OF THE RIVER STOUR

156. LONG COMPTON MILL - NETHERCOTE BROOK

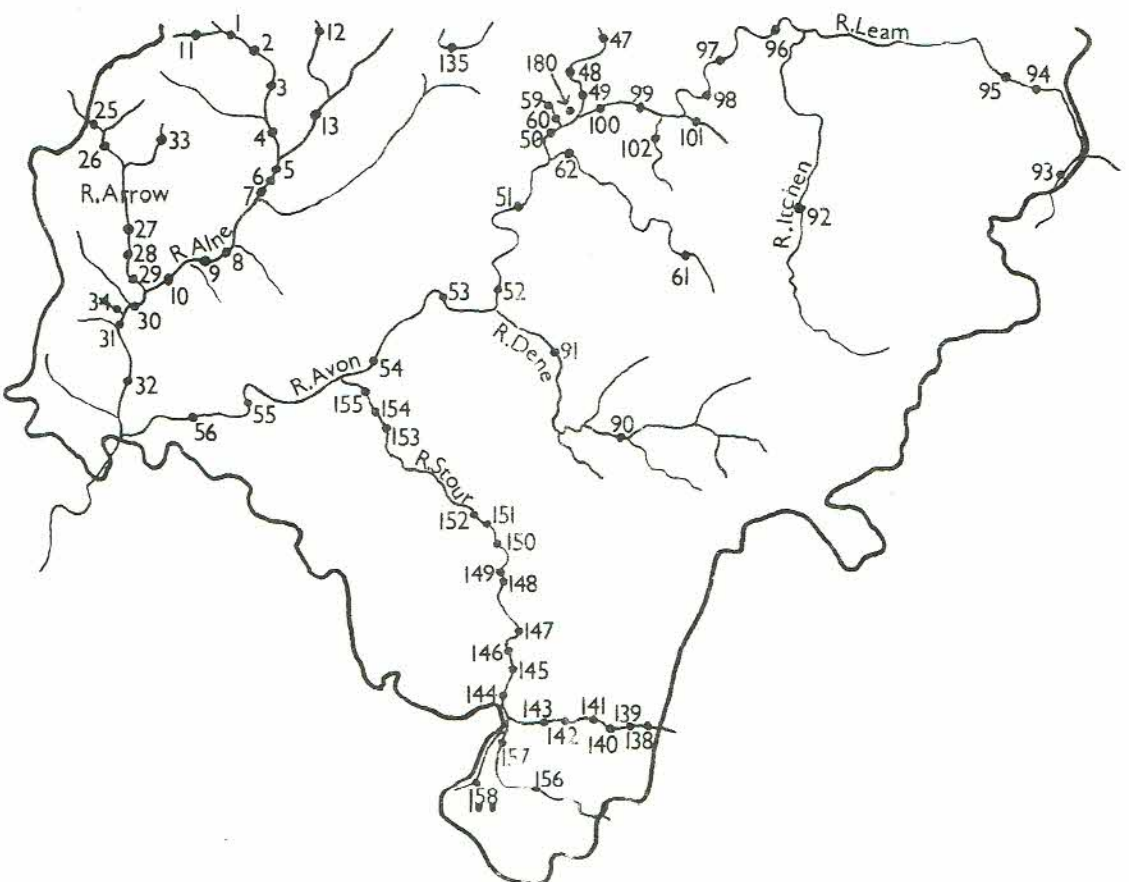
SP 278333

The mill at Long Compton was valued at 10s. in 1086. When Robert Fitz Nicholas, owner of the manor of Great Compton, died in 1272, part of his possessions was a share in the mill.

Joseph Salmon took the mill c. 1810 and it has continued in this family ever since. It ceased working in the 1950's.

The mill, which is a three storey stone building, adjoins the mill house. There is a date-stone inscribed 'R. H. 1758', but the lower courses of the building appear to be older than this. All the machinery was renewed in 1870, including the internal high breast-shot waterwheel. This wheel measures 13ft. diameter by 4ft. wide, and was fed from an iron penshook. The axle was installed by Lainchbury, of Kingham, in 1934.

The iron pitwheel, 7ft. 6in. in diameter, drove the 3ft. diameter wallower on the circular, iron upright shaft. There is a 5ft. 6in. diameter wooden clasp arm spur wheel which once drove two pairs of stones through 20in. wooden stone nuts. One of the stone



Two hundred and forty-three mills are mentioned in the gazetteer, of which one hundred and eighty-two are marked on the distribution map.

In 1974, the year after the initial survey of Warwickshire was completed, the county boundaries were changed to create the new county of the West Midlands. The gazetteer keeps to the original area covered, thus including all of the present county of Warwickshire, and the Metropolitan Boroughs of Birmingham, Coventry and Solihull.

The mills are listed by the main rivers, working downstream followed by their minor tributaries. The main rivers are taken alphabetically. A number by the mill's name refers to the distribution map. Where possible, a brief outline of each mill's history and some information about the buildings and machinery are given. These details should be treated with some reserve as conflicting evidence often occurs and the difficulties of measuring machinery in awkward, if not hazardous situations cannot be over-exaggerated.

The main sources of information were as follows:-

Publications:	Victoria County Histories -	Warwickshire
		Worcestershire
		Gloucestershire
	History of Cornmilling: Volume 2, R. Bennet and J. Elton	
	Local Histories -	Henley-in-Arden, W. Cooper
		Hampton-in-Arden, J. C. Adams
		Kings Coughton, G. E. Saville
	Dugdale Society -	Feet of Fines, Warwickshire
		Quarter Sessions Books,
		Warwickshire
		Monastic Records
	Local Rivers as Sources of Power, J. Morris Jones	
	Trade Directories -	Pigot's
		White's
		Kelly's
Other material:	Collections of manuscripts -	Birmingham Reference Library
		Warwick County Record Office
	Notes on Warwickshire watermills, H. E. S. Simmons	
		Science Museum Library,
		South Kensington
	Papers relating to the millwrighting business of R. Summers (later A. H. Summers) of Tamworth-in-Arden.	
		in private ownership

had been operated with the corn milling machinery for many years, excess power being stored by accumulators at the Hall. On one occasion, the current flow was accidentally reversed and the generator acted as an electric motor driving the waterwheel in the wrong direction. In 1942 mains electricity was installed at the Hall, and the mill stood idle. By 1956 its condition had become dangerous and, after attempts to obtain a grant to help with restoration had failed, the mill was demolished. All that remains is the wheelpit, with the slots of the angled sluices, and the brick plinth on which the generator was mounted.

The mill had been rebuilt in the early nineteenth century. The original mill, probably dating from the seventeenth century, was converted for use as the miller's cottage. As built, the new mill had a thatched roof, but this was replaced by tiles early in the twentieth century. When demolished, some of the machinery was removed for use in another mill.

WHITCHURCH MILLS

There were two mills at Whitechurch in 1086, valued at 20s. In 1584 two mills are mentioned again, one being at Crimscoke. The mill at Crimscoke was still in existence in 1668. Nothing remains to indicate the exact location of these mills, although one may have been near SP 225490.

PRESTON-ON-STOUR MILL

SP 205501

A weir and some watercourses suggest the site of a mill here, but nothing is known of its history. It had certainly disappeared by the early eighteenth century as it is not marked on Beighton's map of 1725.

153. ATHERSTONE-ON-STOUR MILL

SP 206507

In 1086, the mill here was valued at 10s. and ten sticks of eels. The mill was mentioned in 1497 and 1526, and Richard Hinton was the miller in 1653. In 1660, George Cooper of Stratford, a fuller, was indicted for 'stopping the Stour at Athersstone so that the water overflowed the banks'. On Henry Beighton's map of Warwickshire of 1725, the mill is marked as an 'Oyl mill'. Although included in a conveyance of the manor in 1794, the mill must have been demolished shortly afterwards.

On the site the watercourses are still clear, but no buildings remain. An old cottage nearby is called 'Cutlin Mill'.

154. CLIFFORD CHAMBERS MILL

SP 200520

In 1086 the mill was worth 12s., being held by Roger de Busst. In 1265 the manor was held by the Convent of St. Peters in Gloucester, and two mills were included. At this time the tenants of the manor were responsible for carrying millstones to the mill. In 1538 the mill was leased to John Russell for £35 per annum. Elizabeth I granted the manor to Charles Rainstford in 1562, and it was bought by Job and Henry Dighton in 1649. The manor remained in the possession of this family into the nineteenth century, having passed to a nephew, Arthur Annesley, in 1807.

The mill was used as the manor laundry for a short time at the end of the nineteenth

1086. Nothing is known of its early history.

By 1820 Richard Kilby was the miller, followed by two other members of the same family, T. Kilby and F. Kilby. From 1872 the mill was operated by Joseph Holton until it ceased working c. 1910. The mill has since been converted to provide extra accommodation for the adjoining mill house.

The three storey mill and the mill house are built of stone. There was an external waterwheel which drove two pairs of stones, but all the machinery was removed long ago.

150. HALFORD MILL

SP 258455

In 1176 the Bishop of Worcester granted the tithes of the mill at Halford to the Abbey of St. Evroul. By 1279 the mill was held by Margery de Cantilupe from the Earl of Warwick. The mill was leased to Thomas Blakford for twenty-one years in 1521, and was renewed to Edward Blakford in 1544. Bartholomew Hales sold two watermills and land in Halford to Richard Buller in 1564. These mills remained in the possession of the Buller family well into the seventeenth century. John King was the miller at Halford in 1684 and 1685.

By 1845 W. Scarlett was the miller, followed by Mrs. M. Scarlett in 1860.

J. Marshall is recorded in 1868, Thomas Henry Marshall in 1876 and Thomas Brooks in 1884. J. H. Summerton took over the business in 1892, and ran the mill until 1924 when Rupert Summerton is recorded. It is thought to have ceased working in the late 1930's.

The mill is a three storey stone building, and the mill house adjoins it at right angles. The waterwheel was covered by a small wheelhouse which has since been demolished. The waterwheel had been removed by 1947, and the pitwheel seems to have been taken out at the same time. The wooden upright shaft remains, with a 2ft. 6in. diameter iron wallower and a 6ft. diameter wooden clasp arm spur wheel mounted on it. The three pairs of stones were driven by iron stone nuts. The hursting and bridge trees are of wood.

151. NEWBOLD MILL

SP 253361

Newbold Mill is mentioned in 1299, but nothing else is known of its early history.

By 1845 C. Halford was the miller and he remained there until John Wright Hemmings took over in 1872. The next miller was Nathan Jenaway in 1884, followed by George Fox in 1908. It is not certain when the mill ceased working, but by 1947 it had been converted into a residence.

The mill is a large three storey brick building, with a covered loading bay, dating from the nineteenth century. All the machinery has been removed.

152. TALTON MILL

SP 241472

A mill at Talton is mentioned in 1308, being part of the possessions of John Walerand. Later in the same century it passed to the Abbey of Evesham. In 1535 the mill and manor were leased at a rent of £7 13s. 4d., passing to the Barnes family.

J. Smith was the miller by 1845, followed by Henry Middleton in 1872, and J. Middleton in 1892. J. Mallet ran the mill from 1903 until 1924 when Benjamin Ensione is recorded. He operated the mill until 1938, when corn milling ceased, but the wheel continued to be used to generate electricity for Eittington Hall until 1942. The generator

THE MILLS ON THE RIVER ALNE

1. TANWORTH MILL

SP 129691

Henry, Earl of Warwick, held a water mill in Tanworth in the early 13th century, and by 1316 there were two mills in the manor. In 1627 there were three mills belonging to the Archer Estates. One of these may have been at Monkspath, and there also seems to have been a mill near Bedsworth at the same time. The Umberslade Hall estate passed to the Muntz family in later years, and the mills were leased.

William Jones was the miller from the 1820's until 1860 when W. Reader is recorded. Subsequent millers were C. Burman in 1868, Thomas Young from 1872 to 1892, E. H. Summers in 1896, Arthur Burman in 1900, A. and J. Summers in 1904 and W. J. Summers in 1912. T. J. Burrows took the mill c. 1920 and was still there in the 1930's in partnership with A. Hunt. Stan Horchkiss was the last miller, being at the mill until 1947. Since closure the mill and adjacent cottage have been linked by a covered gallery at first floor level. The stone floor of the mill is now used as a living room.

The three storey, brick mill building dates from the early nineteenth century. There is a centrally placed lucam on the upstream side. The external overshot wheel measures 11ft. 8in. diameter by 5ft. wide, and was installed in 1867 by Robert Summers, the local millwright. The wheel was fed from a wooden penstock. The iron pit wheel measures 8ft. diameter and drove a 3ft. diameter iron wallower on the wooden upright shaft. The wooden spur wheel is of clasp arm construction, and measures 8ft. diameter. This drove the iron banded, wooden stone nuts. The hursting and bridge trees are of iron. On the stone floor are two pairs of stones, complete with circular luns. The lay-shafts which drove the sack hoist and dressing machine are still in position, connected by pinions to the crown wheel.

The small pond which fed the wheel has been retained as an ornamental feature, and is now well stocked with large carp. Danzey Green Windmill once stood on rising ground a few yards north of the watermill. This posmill had fallen out of use by the late nineteenth century and was moved to the Avoncroft Museum of Buildings near Bromsgrove in 1969.

2. BOTLEY MILL

SP 145684

This may have been one of the two mills in Tanworth mentioned in 1315. From the seventeenth century it belonged to the Umberslade Hall estate. In the late eighteenth century the mill was leased to John Tarlton by the Earl of Plymouth.

From the 1820's until 1850, Simon Lucas was the miller, followed by Charles Henry Jackson. The mill ceased working in the 1870's and was demolished early this century.

The mill was a small building which stood on the lane leading to Botley Mill Farm. This lane ran along the top of the mill pool dam. The pool had been drained by the 1880's, and no traces of this, or the mill buildings, now remain.

3. HENLEY MILL

SP 153665

In 1185 "the mill at Henlea" was granted to Wootton Priory by Henry de Montfort of Beaudesert. There were two mills in Henley in 1296, and three were mentioned in

1326. In 1591 Henley Mill was granted to Richard Carpenter, and in 1597 he was ordered by the Court to "remove his muck and cley hillock and kepe sufficient the mill end that men may passe, and his branches that the water flowe not over the mill bank." Richard Carpenter's daughter Alice married Thomas Gibbs who, in 1608, was named as the tenant of the manor at a rent of £2 per annum. The mill was then described as a watermill and a horse mill under one roof. In a survey of 1650 there were two corn mills and a horse mill in the occupation of Anne Peacocks.

Samuel Hoitt was the miller in the early nineteenth century followed by Henry Hoitt in 1840. He leased the mill from the Hon. Ann Elizabeth Musgrave, lady of the manor. Henry Hoitt was the miller until 1864 when James Hancock is recorded.

Thomas Dowler Green took the mill in c. 1892, and the buildings and machinery were totally renewed in 1894-5. Long delays in this rebuilding caused financial trouble for both the miller and the millwright, A. H. Summers of Tanworth-in-Arden. Indeed, by 1900, the mill had been taken over by Algernon Richard Hawkes who worked the mill until the early 1920's, having brought in a partner, Howard Sinclair-Brown by 1916. Sinclair-Brown continued alone until 1928 when Charles Richard Prosser of Blyth and Over Whitacre Mills took on the business. This firm operated the mill with a steam engine until the 1940's. All the machinery has been removed and the building is now used as a store.

The mill is a three storey brick building and had an internal high breast-shot waterwheel. This was fed by a leat from the river which filled a small pond behind the buildings. The leat is now dry, and the mill pond has been filled in. There is a mill house adjoining the mill on its eastern side.

4. BLACKFORD MILL

SP 153651

This may have been one of the mills in Henley mentioned in 1296 and 1326. In 1608 it was named as 'Hobdaye's Mill or Nethermill', being mentioned in a survey of the boundary of the manor of Henley.

Richard Gibbs was the miller from the 1820's until 1854 when G. Bray is recorded. Subsequent millers were J. Lewis in 1868 and 1872, Richard Chamberlain in 1876, and William Hodges from 1879 to 1889. The last miller recorded in the trade directories was John Agar who operated here from 1889 until the early 1900's. However the mill continued to be used for the production of animal foodstuffs until the early 1950's when the main river sluice gates were damaged. These have now been removed completely and the mill is used only as a store.

The mill is a three storey brick building with a central lucam. An extension to the rear contains a large bread oven on the ground floor. The large mill house adjoins the mill on its eastern side. The breast-shot waterwheel is externally placed, protected by a small wheelhouse, and measures 15ft. diameter by 8ft. wide. There is a 10ft. diameter pitwheel which drove a 3ft. diameter wallower on the upright shaft. The 6ft. diameter wood-cogged spur wheel drove three 15in. stone nuts. All this gearing and the hurst frame is of iron. The fixed bridge trees are in the form of a continuous semicircular iron plate supported by the main posts of the hurst frame. This machinery and the waterwheel axle were installed in 1879-80 by Robert Summers. On the stone floor are three pairs of stones, complete with circular tuns and octagonal hoppers.

There is a short lay-shaft from the crown wheel which drove the automatic sack hoist. In recent years this hoist has been operated by a small petrol engine. Another shaft from the crown wheel was connected by belt to a long shaft in the rear wing of the building. Pulleys mounted on this shaft drove auxiliary machinery.

146. SHIPSTON MILL

SP 260404

A mill at Shipston on Stour was worth 10s. in 1086, and it was mentioned again in 1240.

The mill was held by the Stephens family from the 1820's until James Hands became the miller in 1845. In 1860 the firm of Wilson and Son is recorded and Isham Baker Wilson was running the mill in 1872 and 1876. Jonathan Sheldon is recorded between 1884 and 1892, followed by Walker and Atkinson who were there from the late 1890's until 1928. James Atkinson continued to operate the mill until it closed c. 1930. This firm still owns the premises next to the mill. Since closure the mill buildings have been converted into a hotel.

The three storey brick building, which dates from the eighteenth century, has a centrally placed lucam. There was an internal undershot waterwheel, but this was removed, along with the rest of the machinery, when the mill closed. The wheel drove two pairs of stones and much modern machinery, some of which was taken to Birmingham Mill.

The watercourses to the wheel are intact, with the remains of the bypass sluice beside the mill.

147. FELL MILL

SP 268414

There was a mill on this site by 1725 for it is marked on Henry Beighton's map. Nothing is known of its history and it was disused by 1886.

The mill cottage still stands, but all trace of the mill buildings has gone.

148. TREDINGTON MILL

SP 260435

There were three mills at Tredington in 1086, and at least one of them probably stood on this site. In 1409, the Bishop of Worcester complained that Richard Wyeh, parson of the church of Tredington, with others, broke into the manor house, dovecot and mill at Tredington. By 1649 only two mills are mentioned.

J. Farden was the miller in 1845, followed by T. Sheldon in 1860. From 1872 until 1898 Bryan Lyster was at the mill, followed by William Hodges in 1892. William Hodges was the last miller, continuing to work the mill until c. 1925. When he died in 1940 the buildings were sold for conversion into several residences. All the machinery was removed, and the iron-work sold for scrap.

The mill building is in two sections which were built at different times. The older part, dating from the eighteenth century, is a three storey brick structure which housed an undershot waterwheel and four pairs of stones. On the upstream wall of this is a large lean-to which once housed a steam engine. The other main section, erected in the nineteenth century, is a four storey brick structure, built against the downstream wall of the older building. The ground floor forms a covered loading bay from which sacks could be hoisted directly into the mill. Adjoining the mill is a substantial mill house and a small cottage. The other buildings in the mill yard were once a bakery and a brewhouse, but these too have been converted into residences.

149. HOLTOM'S MILL - TREDINGTON

SP 257438

This mill probably stands on the site of one of the Tredington mills recorded in

The mill is a small three storey structure, built of stone and brick. It contains an internal overshot waterwheel of considerable age. The wheel is of clasp arm construction, and measures 10ft. in diameter by 5ft. 5in. wide. One side of the wheel has collapsed, as has the wooden penstock. The old wooden axle must have been replaced in the nineteenth century by the existing iron one, the space between the axle and arms of the wheel being filled by special castings. The rest of the gearing appears to have been replaced at about the same time. There is a 7ft. 6in. diameter iron pitwheel which drove a 3ft. diameter iron wallower on the upright shaft. The wood-cogged iron spur wheel, 7ft. in diameter, drove a single 20in. iron stone nut. The wooden hurst frame and bridge trees show that there were formerly two pairs of stones. The one remaining pair of stones is complete with furniture. There are two short lay-shafts from the crown wheel, one of which drove the sack hoist by pulley and belt. The other probably drove a dressing machine, but this was removed long ago.

The long leat which fed the wheel is completely dry. It passed under the bridge by the mill and from there the water entered the wooden penstock. The penstock controls are directly above, on the stone floor. The tail race carried the water away from the wheel through a long culvert which passes close to the nearby derelict mill cottage before emerging to re-enter the river.

144. BURMINGTON MILL

SP 261381

In 1086 the mill at Burmington was worth 10s. In 1540 the mill was owned by Nicholas Tooley and John Tooley had two mills there by 1606.

T. Sheldon was the miller by 1845 and Jonathan Sheldon took over the business in 1872. By 1896 R. White was at the mill, followed by Walker and Atkinson in 1908.

The Atkinson family ran the mill until the early 1950's. When milling ceased the building became the workshop of a firm manufacturing prefabricated buildings, but in recent years the upper floors have been converted into flats.

The older part of the four storey brick building dates from the eighteenth century. A similar structure was added to the north face of the mill in the nineteenth century.

There were once two internal waterwheels, but both were replaced by turbines. One of these is still in place, connected to a generator, but is no longer operable. All the milling machinery was removed when the building was converted for use as a workshop in the 1950's.

The nearby mill house is a substantial building dating from 1752.

145. BARCHESTON MILL

SP 264398

The mill at Barcheston was valued at 100d. in 1085. It was mentioned again in 1217, being tenanted by Simon de Barcheston.

From 1845 to 1876 George Pain is named as the miller, followed by John Padbury from 1884 to 1924. Padbury rented the mill from William E. Marshall and James Green who were successive occupants of Barcheston Manor Farm. In 1928 Arthur Hancock is recorded as miller and the mill closed a few years later.

The mill building is a small three storey brick structure which had an undershot waterwheel enclosed in a brick wheelhouse. Both the wheel and the wheelhouse have been removed. All of the machinery was removed c. 1940.

5. WOOTTEN WAWEN MILL

SP 157631

In 1086 there were three mills in Wootten Wawen. One was valued at 4s. and the other at 11s. and eight sticks of eels. In the early eighteenth century the mill on this site was converted to paper making, William Marten being a paper manufacturer at Wootten in 1717. In 1794 Thomas James, master of the mill, was fatally injured there. The last paper manufacturers were Wrighton and Young who ran the mill until 1806.

By 1845 the mill was being used for corn grinding by T. Oldham and George Bullivant. Bullivant continued there until George Ball took over the business in 1888. The last recorded miller was Keighley Peach in 1908. The mill closed as a corn mill in 1912, but continued to generate electricity for Wootten Hall and the estate. A turbine had been installed for this purpose in 1904. The building is now used as a store by a firm of lawnmower manufacturers.

The mill is a fine, five storey structure built of brick and dating from the early eighteenth century. There is a school and a few cottages adjacent to the mill, and the fine mill house stands nearby. All the corn grinding machinery has been removed but one of the two turbines remains in position. The survivor is a 1904 Girard turbine which generated 96 h. p. This was succeeded in 1921 by a more modern Armfield turbine, removed in 1975. Both were installed in the main wheel pit, using an effective fall of eighteen feet. The subsidiary waterwheel was removed c. 1920. The turbines were fed from a small pond, immediately behind the mill, which is fed by a long leat from the river.

6. PENNYFORD MILL

SP 151622

This may have been one of the three mills in Wootten Wawen recorded in 1086.

Nothing else is known of its early history.

By 1845, D. Morris was the miller, followed by Richard Morris in 1850. No further millers are recorded, and the mill seems to have ceased working by 1900. The building was converted into a house early this century, and all the milling machinery removed. The water wheel was retained for many years but had been dismantled by 1930.

The appearance of the building has been considerably altered by the addition of a bay window and porch. The wheel was mounted externally in a small wheel house, but this too has been removed.

7. GRAY MILL

SP 145615

This may have been the paper mill in Aston Cartlow operated by Thomas F'ruin during the eighteenth century. It seems to have reverted to corn grinding in the early nineteenth century.

William Hancock was the miller there in the mid-nineteenth century, but no other millers are known. The mill is thought to have ceased working c. 1910, and most of the machinery had been removed by the early 1930's. What survived was sold for scrap c. 1950. Part of the building is now used as a stable, and the small mill cottage is still occupied.

The mill building is a small brick structure of three storeys. The waterwheel was mounted externally in a brick wheelhouse. The oldest section of the building is timber framed, and may have been part of an earlier mill.

8. ASTON CANTLOW MILL.

SP 136596

In 1086 the mill at Aston Cantlow was valued at 8s. and 5 sticks of eels. It is thought to have been granted to Studley Priory by the thirteenth century. The Priory leased the mill to John Palmer in 1510 at a rent of 45s. 8d. The lease included a house, land and "nets to fish the water of the same mill." John Palmer was responsible for all repairs except "great timber". In 1554 the mill was granted, with the manor, to Anthony Skinner. By 1743 Thomas Archer of Umberslade Park was the owner, and in 1799 the buildings were being used as a paper mill by Henry Wroughton.

By 1850 James Parlow of Studley had converted the mill to needle scouring, and this continued under various tenants, including W. Bennett and James Hill until the late 1880's, when corn grinding machinery was installed. George Bull was the miller in the 1890's. The mill is said to have been used in the manufacture of ball bearings early this century and was finally abandoned c. 1917.

The buildings were demolished some time after this and only the foundations remain. The brick-lined wheel pit, with the guides of the curved sluice gate, is still clear.

9. GREAT ALINE MILL.

SP 122589

The mill at Great Aline was valued at 5s. in 1086, and 6s. 8d. in the taxation of 1291. Nothing else is known of its early history except that it was leased to John Palmer in 1576.

By 1845 the buildings were occupied by J. Eivins who worked there until 1864 when J. Hancock was the miller. William Spencer took over the business in 1872 and his family remained at the mill until the mid 1960's when production ceased. In later years the firm was known as Spencer, Son and Hancock.

When the mill closed the Millers' Mutual paid a large sum of money for a covenant that flour would not be milled there by roller within the foreseeable future, and that the roller plant be scrapped. This is an example of a practice that has permanently closed many of the smaller commercial mills.

The mill is a large four storey structure which has been considerably altered over the years, especially during the late nineteenth century. The oldest part, dating from the eighteenth century, is now encased by later additions. Part of the adjoining mill house was demolished to enable a bulk grain hoist to be installed.

Early this century an East German turbine was installed and this operated all the milling machinery, latterly aided by a Ruston twin cylinder diesel engine at times of peak load or low water. By a complicated system of belt drives the turbine was connected to twelve German roller mills, now removed, and two pairs of composition stones. Until 1975 the mill was the home and workshop of Derek Ogden, the well-known millwright, and the turbine was used to operate wood and metal working machinery.

10. HOO MILL.

SP 107579

In 1086 this mill was valued at 6s. 8d. A watermill was recorded as part of the manor in 1315.

In 1844 Holyoake's of Redditch bought the property and built a small needle pointing mill onto the existing corn mill. Both sets of machinery were operated by the single waterwheel which was sited between them. Presumably corn milling occupied the daylight hours and at night the pointers took over, operating by the light of the sparks

effected by small hand wheels. Two of the three pairs of Peak stones are complete with turns, but only the bedstone of the third pair remains. There are two lay-shafts connected to the crown wheel by iron pinions. One of these carries a large pulley outside the mill to which an engine could be connected. The other carries two pulleys within the mill, one of which operated the sack hoist, and the other is now used to drive a generator.

141. STOURTON MILL.

SP 301367

There were two mills at Stourton in 1221, and both are mentioned in 1594 when Edmund Harwell conveyed them to William Milward. In 1694 Thomas Belford was the miller.

The Smith family held the mill from the 1840's until 1884, W. Smith being recorded from 1845 and John Smith from 1860. From 1888 to 1896 Samuel Middleton was at the mill, followed by Mrs. Martha Middleton in 1900 and 1904. In 1908 the firm of Walker and Atkinson is recorded. The same firm also held the mills at Cherrington, Burnmington and Shipston. The last miller was William Wood, who is named in 1921 and 1924.

Since closure the mill has been demolished and the site is marked by a waterfall constructed at the end of the head race. The fine mill house still stands nearby.

142. CHERINGTON MILL.

SP 291368

There was a mill at Cherrington in 1332 when John the miller was taxed 1s. 6d. In 1598 the miller was Raffe Steele, whose descendant, William Steele, bought a house and watermill when the manor was sold in 1680.

By 1845 J. Righton was the miller, followed by W. Jarratt in 1860. Henry Wallford held the mill in 1872 and remained there until Walker and Atkinson took over in 1908. Oliver Burnham was the miller in 1912 and the last miller, John Long, who still lives in the mill house, is recorded from 1921. The mill ceased working in the early 1950's.

The mill building, which dates from the mid-nineteenth century, stands between the adjoining mill house and farm buildings. It is three storeys high, being built of alternate red and yellow brick. There is a date stone high up on the front wall but the figures are no longer legible. The internal, breast-shot waterwheel measures 12ft. 6in. diameter by 5ft. wide. There is a 9ft. diameter iron pitwheel, and a 3ft. diameter iron wallower on the upright shaft. The 8ft. diameter wooden spur wheel is unusual in that it is of compass arm construction. The wooden stone nuts are 18in. across, and once drove three pairs of stones. The hurst frame and bridge trees are of wood. Of the stones only one pair of Peak stones are complete with tun and hopper. A long lay-shaft from the crown wheel runs almost the whole length of the stone floor. This took the drive to the sack hoist. Another shaft carried the drive through a pulley and belt to the adjoining barns where another hoist and farm machinery, including a cider mill, were operated.

143. WESTON MILL.

SP 278367

There was a mill at 'Weston juxta Chirriton' towards the end of the thirteenth century, when it was held by John de Weston.

By 1845 J. Wheeler was the miller and he is still recorded in 1872. The next known miller was Richard H. Creber in 1900 and 1904. By 1908 the mill was occupied by Thomas Kilby, followed by F. E. Kilby in 1912. The mill was used for a short time after this but had closed by 1920.

THE MILLS ON THE RIVER STOUR

138. BRAILES MILL

SP 328367

There was a mill at Brailes in 1086 which was valued at 10s. In 1529 the mill was leased to William Willington and later to William Rainford. In 1547 the manor and watermill were sold to William Sheldon by Thomas Wymbish. The mill was mentioned several times in the seventeenth century.

It appears to have been working in the early nineteenth century for it is marked on the O. S. 1in. map of the late 1830's, and in 1845 James Harris is recorded as the miller. No later millers are known and the mill had been demolished by 1886.

No traces of the buildings remain but there is evidence of a banked watercourse and a depression which may have been the pond.

139. WHICHFORD MILL

SP 316365

In 1086 two mills were included in the manor of Whichford, but nothing else is known of their early history.

By 1850 R. Matthews was the miller, followed by T. Sims who is recorded in 1860 and 1864. R. Sims held the mill from 1868 until 1884 when Benjamin Martin is named. T. Stockley was at the mill in 1892 followed by Edwin Cook until 1912.

The building is of stone, three storeys high, and adjoins the mill cottage which has a date stone reading 'R. M. E. 1711'. The high breast-shot waterwheel and much of the machinery were removed c. 1937. The rest was taken out when the mill was converted to provide additional accommodation to the cottage.

The wheel was fed by a long beat which filled a small pond behind the mill.

Although the pond has been filled in its outline can still be traced.

140. SUTTON MILL

SP 307365

This may have been one of the four mills included in the Deerhurst Estate at the time of the Domesday Survey. In 1545 it was granted to Sir William Petre, Henry VIII's secretary.

By 1845 H. Hams was the miller, and the Hams family continued to work the mill until James Barnes took over in 1876. Subsequent millers were Zacharias Martin in 1884, John Hopkins from 1888 to 1896, and George Henry Bonford from 1900 to 1908.

William Burson took the mill in 1912 and ran it until 1943. A Mr. Harhill then bought the mill and used it occasionally until c. 1950. Early in 1972 the wheel was re-started by Mr. Fox, who had bought the property some years previously. The present owners are keeping the wheel in working order, though not using it for grinding.

The mill adjoins the stone mill house, and is a three storey building. It is built mainly of stone, but in the course of restoration in 1941, some brickwork was introduced, including the wheelhouse. There is a high breast-shot waterwheel measuring 12ft. 4in. in diameter by 6ft. 6in. wide. The penstock is mainly of iron and operates by a drop-flap mechanism to direct the water onto the wheel. The main gearing, which is all of iron, consists of an 8ft. diameter pitwheel driving a 2ft. 3in. diameter wallower on the iron upright shaft. The wood-cogged spur wheel is 9ft. in diameter, and there are three 18in. stone nuts. The hursting is all iron, with fixed bridge trees and centre-lift tentering

from their grindstones. The fine mill house which adjoins the corn mill was also erected at this time. By 1854 the corn mill was leased from Holyoake's by D. Morris and descendants of this family still occupy the property, having bought the freehold in the 1870's.

The majority of the existing corn mill buildings date from 1810 when extensive rebuilding was carried out. Much of the existing machinery dates from this time. The needle mill still stands, but its machinery was removed long ago.

The mill is powered by a low breast-shot waterwheel measuring 18ft. 6in. diameter by 5ft. 6in. wide. This wheel was installed by Edward White of Redditch in 1810. The drive is carried to an iron pit wheel 10ft. 4in. in diameter which connects with a 4ft. diameter iron wallower on the wooden upright shaft. The final stage is taken through a 10ft. 4in. diameter iron spur wheel to three 2ft. diameter wooden stone nuts. On the stone floor are three pairs of 4ft. diameter composition stones, complete with tuns and hoppers. From the crown wheel a lay-shaft drove the wire machine and an oat crusher, while another is connected to the belt-driven sack hoist. This sack hoist includes an elaborate mechanism on the bin floor which caused the tension in the driving belt to be released automatically when a sack of grain reached the top of the mill.

Although the stones have not been driven for many years, the wheel and main gearing are used regularly to drive a circular saw and an apple crusher.

THE MILLS ON TRIBUTARIES OF THE RIVER ALNE

11. FORDE HALL FARM WHEEL

SP 115692

In 1884 Robert Summers prepared a drawing for an overshot iron waterwheel to be sited on the brook close to Forde Hall. The design shows a 9ft. diameter wheel driving a large pulley through an iron pitwheel and pinion. A watercourse marked on the 1886 O. S. 6in. map, and brickwork on site, suggest that the wheel was erected, but what machinery it operated and when it was demolished remain a mystery.

12. ROWINGTON or LAPWORTH AND RUSHWOOD MILLS

SP 175698

The sites of these mills are difficult to locate today. It may be that all the names refer to a single mill at the location suggested above. However, it is more likely that Lapworth and Bushwood Mills were at this site and that Rowington Mill stood on Kingswood Brook. The site of this mill would be totally obliterated during the construction of the Stratford-upon-Avon Canal which follows the stream from Kingswood to beyond Preston Bagot.

In 1647 Prudence and Daniel Wallington were recorded as millers at Bushwood, and in 1650 the inhabitants of Lapworth were indicted for not scouring the watercourse at Tapsoth Bridge leading towards the mill. In 1669 Thomas Cullupp of Lapworth was before the courts for stopping a footway leading from Lapworth Street to Bushwood Mill. In 1672 James Leake of Rowington Mill was presented for 'not keeping a sufficient highway over the Heame there lying betwixt Bushwood and Rowington Church.' The court records of 1675 note that Robert Palmer of Lapworth parish was presented for stopping of a watercourse in Kingswood in the parish of Lapworth, which watercourse usually ran down to the watermill there. Finally, John Labins, who had been the miller at Rowington since before the early 1680's, was indicted in 1692 for 'turning an ancient watercourse to the mill at Rowington.' At the same session he was also indicted for causing a nuisance!

It would seem that water supply was a constant problem to these mills and it is no surprise that they disappeared at the end of the seventeenth century - not being marked on Beighton's map of 1725.

13. PRESTON BAGOT MILL

SP 173655

There was a mill at Preston Bagot in 1086 valued at 16s. In c.1200 Simon Bagot gave two mills, with 'the multure of his households and his men of Preston, with right of way, and a strip of land seven feet wide along one bank of the stream for repairing the mill pond' to the Abbey of Reading. In 1291 the Abbey valued these mills at 10s.

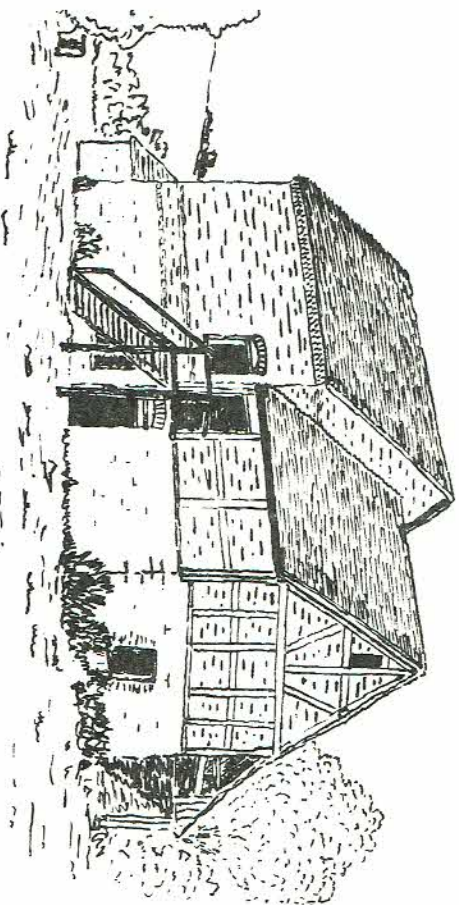
The Throckmorton family owned the mills until the beginning of the seventeenth century when they passed to Richard Williams. He left one mill to his son Job in 1603. In 1740 Thomas Holyoake of Henley-in-Arden bought one mill with the manor of Preston Bagot. The mill remained the property of the manor until recent years.

From the early nineteenth century Thomas Moore was recorded as the miller. W. Moore took over in 1884 and operated the mills until c.1910. The mill was still working in 1927 but eventually the buildings were converted for use as a house and restaurant.

The character of the mill buildings was greatly altered by this conversion. A photograph of 1929 shows the mill as a three storey brick building with an adjoining single storey cottage. The roof of the cottage has since been raised to the level of the mill roof and many windows have been inserted. There was an external overshot waterwheel on the road side of the building.

The leat which fed the wheel can be traced back upstream to the site of another mill. A few traces of this mill were visible until recent years. No doubt this was the second mill at Preston which seems to have become disused early in the seventeenth century.

Gray Mill (7)



William and John Boddington were millers, and they continued as such until Francis Robbins took over the business in c.1850. He operated the mill alone until c.1872 when the business became known as Robbins and Power. The buildings were used for corn grinding until the 1880's, and from then until 1912 the main product was oil cake. The mill stood until 1964 when the site was cleared for re-development. No traces of the mill or its watercourses remain.

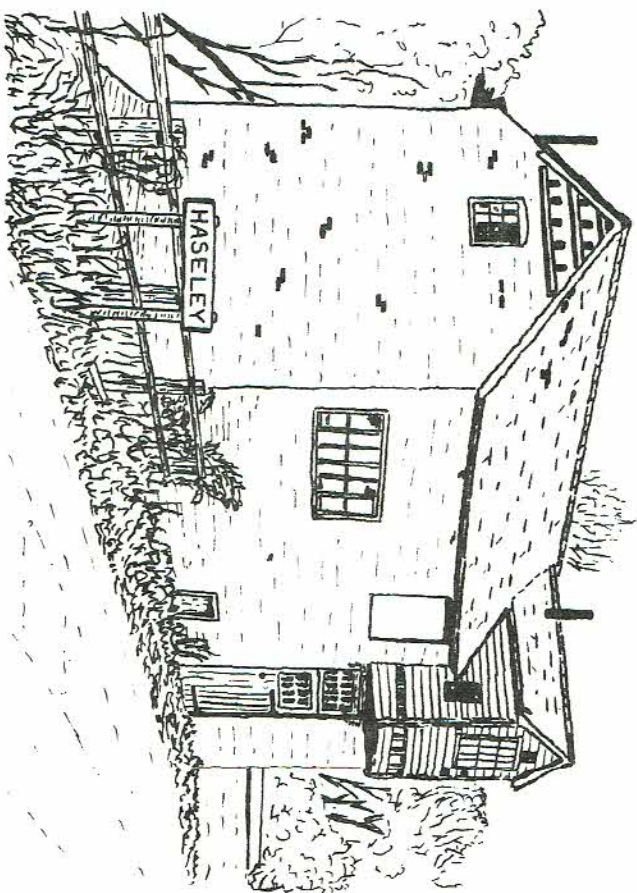
137. PIPES MILL - FINNHAM BROOK

SP 328738

This may have been one of six mills in Stoneleigh recorded in the sixteenth century. It is thought to have ceased working in the mid-nineteenth century. On the O.S. 6in. map the mill is marked, but not the watercourses leading to the wheel. The mill building was converted into a house many years ago.

The building was considerably altered in the conversion, and only the wheelpipt of the external waterwheel is clear.

Haseley Mill (135) before demolition in 1977



in the Domesday Survey. Their joint value was 35s. 4d. By the sixteenth century there were six mills in the area, and it is difficult to establish which stood on this site. In the eighteenth century, only two mill sites remained. One stood here, and the other was on the Avon, near Stoneleigh Abbey. The latter had disappeared by 1830. Stoneleigh Mill was demolished before 1886. Only the watercourses remain today.

THE MILLS ON TRIBUTARIES OF THE RIVER SOWE

133. HOPSFORD MILL SP 416833

There was a mill here by 1725, and it was named Hopworth's Mill on a map of the Oxford Canal, drawn in c. 1770. It is thought to have ceased working in the mid-nineteenth century. No trace of the mill remains on the site.

134. PAILTON MILL - SMITTE BROOK SP 461822

This may be the site of the mill in Street Ashton, mentioned in 1304. In 1341 Pailton Mill was granted to Sir John Revel.

It is thought that Thomas Maine was the miller from the 1820's until c. 1854, when T. Haselwood is recorded. Job Band was at the mill in 1864, followed by Alfred William Haselwood in 1884. The last known miller was Thomas William Cordell who worked the mill from c. 1900. The mill probably closed c. 1914.

The main mill building was demolished many years ago, and only some outbuildings remain. The wheelplot can still be seen, and the overgrown foundations of the mill. The outline of the mill pond and the tail race are still visible.

135. HASELEY MILL - INCHFORD BROOK SP 236684

There was a mill at Haseley in 1086, valued at 4s. By 1632 there were two water-mills in the parish.

In the nineteenth century the only known millers are B. Collis in 1860, followed by A. Ball from 1868 until the mill closed c. 1900.

The mill stood until 1977, but all the machinery including the external waterwheel had been removed. It was a three storey brick building with a lucam overhanging the lane which runs on top of the dam of the mill pond. In the field on the other side of the lane, the outline of the pond is still clear.

136. KENILWORTH MILL - FINHAM BROOK SP 294727

There was a mill attached to Kenilworth Castle in 1296, near the southern outworks, and in 1291 Kenilworth Priory held two mills in the area. The site of one of these is marked on the O.S. 6in. map of 1886, though it is thought to have been demolished many years previously. Kenilworth Mill probably stood on the site of the second mill owned by the Priory. In 1612 Robert Dudley had three mills in Kenilworth. In 1814, the mill was leased to Thomas Wright and William Tibbits. By 1835,

THE MILLS ON THE RIVER ANKER

14. ANKER MILL SP 415886

A mill at Bramcote was given to the Abbey of Leicester in c. 1143, and may have stood on this site. It remained in operation until the mid-nineteenth century. By 1886 the buildings had been demolished though the watercourses were intact.

The mill pool survives, as do the remains of an outbuilding close to the site of the mill.

15. BURTON MILL SP 405899

In 1086 there were two mills in Burton Hastings valued at 7s. 8d. In 1622 Peter Everton, the miller, was brought before the court for taking 'excessive and unlawful toll for grinding wheat and rye'.

By 1828 the miller was Joseph Barrs, followed in 1845 by Thomas Cooper Scott. From c. 1860 the mill was worked by members of the Morris family, and has remained their property to the present day. The mill still operates, though probably by electric motor.

The mill is a three storey brick building. The waterwheel and machinery are thought to be in place, along with modern milling equipment. No details are known as permission to survey the mill was emphatically refused.

* * *

In the area around Nuneaton there may have been many mills. One existed in 1086, valued at 32d. By 1291 Nuneaton Priory owned two mills in Nuneaton worth £1, and another in Stockingford. There also seem to have been several mills in Chilvers-coton from the fifteenth century onwards. In 1683 William Smith is mentioned as being a miller at Nuneaton. In 1694 Henry Page of Chilverscoton, miller, was brought before the court for 'keeping the water at Coventry Bridge, Nuneaton, so high as to endanger travellers' lives'.

The only mills known to have survived into the eighteenth century were a mill at Barr Pool, Cattle Mill on Cattle Brook and Nuneaton Mill on the Anker. Since then Barr Pool has been drained and the site of this mill has been lost. Cattle Mill (SP 366906) was working at the end of the eighteenth century, but had gone by 1830. The leat and pool survived until recent years, but are now covered by industrial premises.

16. NUNEATON MILL SP 363917

This mill continued to operate through the nineteenth century. By 1835 Thomas Hinks and John Insley were the millers, followed by T. Hollick in 1845. John Knowles had taken over the business by 1868, and totally rebuilt the mill in 1886. From 1921 it was operated under the name Nuneaton Flour Mills Limited and finally ceased working in the late 1960's. The buildings were demolished in 1973.

The mill was a large, five storey brick building. A steam engine had been the main source of power since 1836. All the milling machinery had been removed prior to the

demolition of the buildings. The watercourses around the mill site are intact.

17. CALDECOTE MILL

SP 348944

In 1086 the mill at Caldecote was valued at 2s. The mill is mentioned in the fourteenth and sixteenth centuries. In 1584 there were three mills in the manor, probably including a windmill. In 1794 a watermill and a windmill were conveyed with the manor. The mill was still working in 1830 when Richard Barrs was the miller. It had been demolished by 1886.

No traces of the mill or its watercourses remain on the site.

18. LEATHER MILL

SP 340956

One of the Caldecote mills, mentioned in 1584, may have stood on this site. By the 1830's it was known as 'Leather Mill'. In 1845 it was occupied by T. Swinerton and in 1864 by Swinerton and Jee. The mill is thought to have been demolished in 1874. An entry in the account of Job Toon, a millwright from Atherstone, for that year reads 'Sept. 15 - taking down and delivering machinery from leather mills'. On the 1886 O. S. 6in. map, only the nearby cottages are marked.

These cottages still stand, and the site of the mill and its watercourses are visible.

19. MANCETTER MILL

SP 322366

There was a mill at Mancetter in 1550, but nothing else is known of its early history. It may well have belonged to Merevale Abbey until about that time.

In 1845 J. Robson was the miller and he remained there until Charles Pinchback took over the business in c. 1872. Henry Ingram was at the mill from 1896 to 1921 when the firm of Gomm, Donnelley and Carr was recorded. They were followed by John Lea in 1928 and Thomas Charnell by 1936. The machinery remained intact for a few years but was eventually sold for scrap. The building is now used as a store and chicken house.

The mill was a small, three storey brick building, but the gabled roof has since been replaced by a flat one, thus reducing its height considerably. The undershot waterwheel was mounted externally, but enclosed in a wheelhouse. Water still flows along the head race and through the wheelpit.

20. WITHERLEY MILL

SP 322978

There was a mill on this site by 1725. In 1828 it was occupied by John Archer, who was followed by William Walters in 1835. In 1877 a new waterwheel shaft was installed by Job Toon for the Reverend E. Chamberlain. The mill is thought to have worked until the 1900's.

Only the foundations of the small brick mill remain. The site of the wheelpit and the watercourses are still clear.

129. BINLEY MILL

SP 377787

The mill at Binley was valued at 40d. in 1086. In 1682, Edward Treen was the miller.

In 1839 the mill was leased to Thomas Cox by the Earl of Craven, and he worked there until his death in 1851. G. Keene was the next tenant, followed in 1860 by Andrew Halford. Halford remained at the mill until c. 1900. The last known miller was H. A. Blythe in 1908. The buildings remained for many years but have now been demolished.

The foundations of the mill are all that can be seen on the site.

130. BAGINTON MILL

SP 339753

In 1086, the mill at Baginton was valued at 10s. 8d. In 1545, Francis Goodere owned a mill called 'overcorne myll', which probably stood on this site.

W. Grimes was the miller in 1845, followed by Francis Robbins in 1850. By 1872, Henry Allen was at the mill, and his family continued there until c. 1908 when S. Branston took over the business. Branston continued to operate the mill until the late 1920's. For some years after closure the mill was occupied as a private residence, but has since become a public house and restaurant. Much rebuilding has been carried out to suit the mill to its new purpose, but parts of the original remain.

The old mill building is now surrounded by extensions. During conversion all the machinery, except the waterwheel, was removed. This undershot wheel still turns, and can be seen from the restaurant. It measures approximately 18ft. in diameter by 3ft. 10in. wide.

131. BAGINTON FULLING MILL

SP 341740

In 1545 Francis Goodere owned 'Netherwalke myll' at Baginton situated 'below the place where the castle once stood'. The following entry occurs in the Quarter Sessions Book of 1656:

'... upon a motion now in court made on behalf of the owner and occupiers of a fulling mill in Baginton which never hath paid any taxes or levies of late, but now the inhabitants of Baginton have taxed the same at the rent of £12 by the year as if the same were land of so much value, not considering the casualties and decays which yearly happen by reason of floods and other disasters causing great expense of repairs, whereupon it was Prayed that the said tax might be discharged, this court conceiving that all mills ought to be taxed but with consideration had for the casualties and uncertainty of profit incident therunto doth therefore order that the said fulling mill shall pay only after the rate £9 by the year to all such taxes and levies as are within the survey of this court and for hereafter shall be taxed and levied for the reasons aforesaid'.

The mill continued as a fulling mill through the eighteenth century, but had been demolished by 1830.

Parts of the watercourses can still be traced, including the site of the weir on the river, and the tail pool below the mill. The site of the building is heavily overgrown.

132. STONLEIGH MILL

SP 332730

This was probably on the site of at least one of the two mills in Stoneleigh recorded