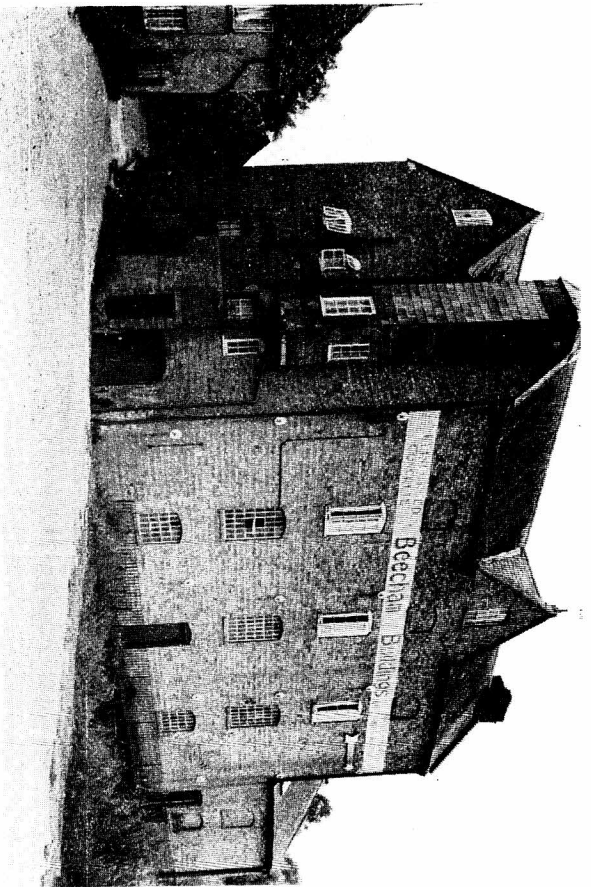
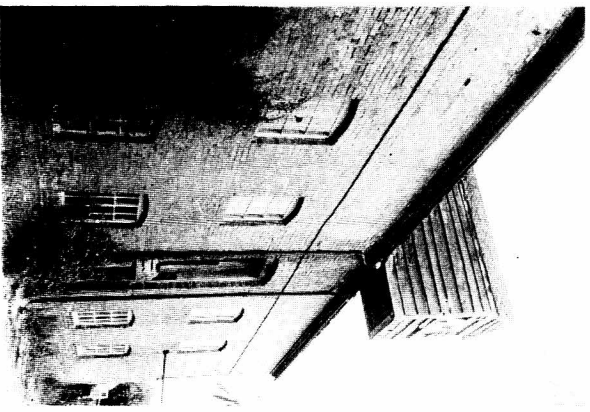


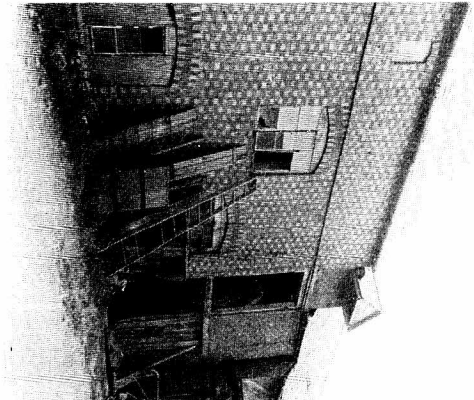
WATERWHEELS



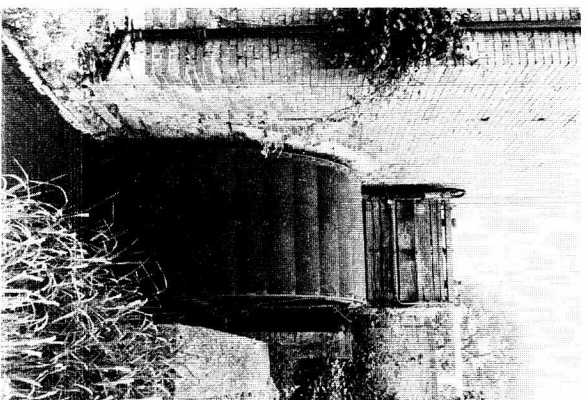
Burrington Mill (61)



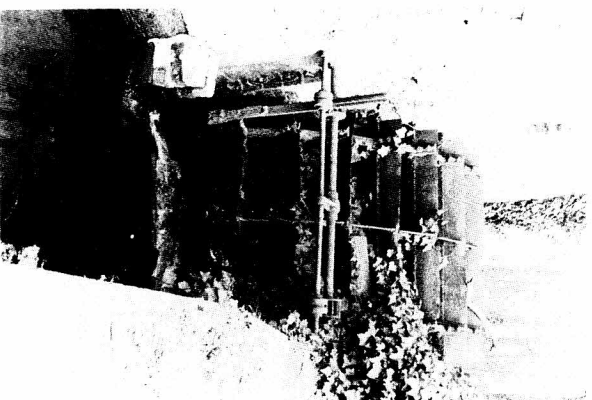
Charleote Mill (52)



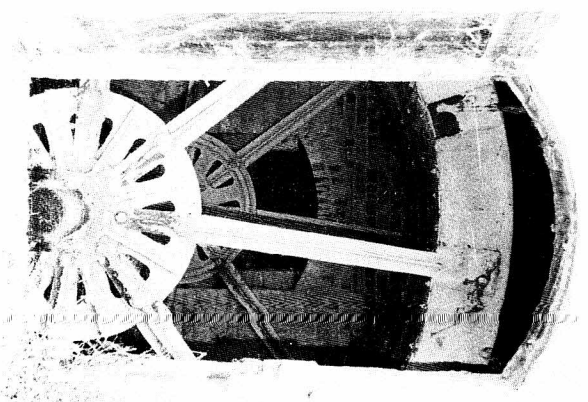
Cherrington Mill (142)



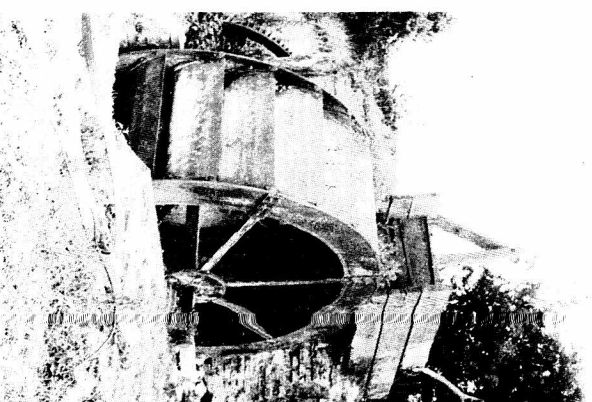
Tanworth Mill (1)



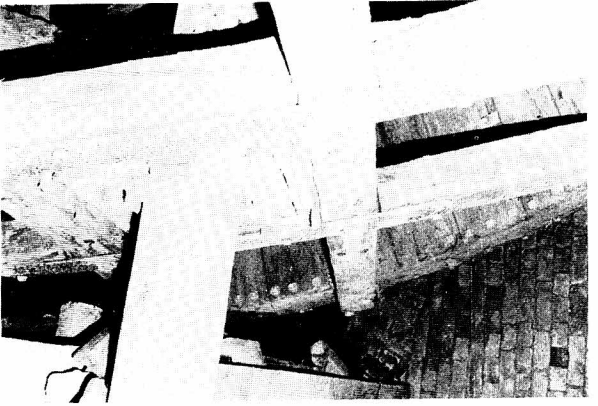
Henwood Mill (63)



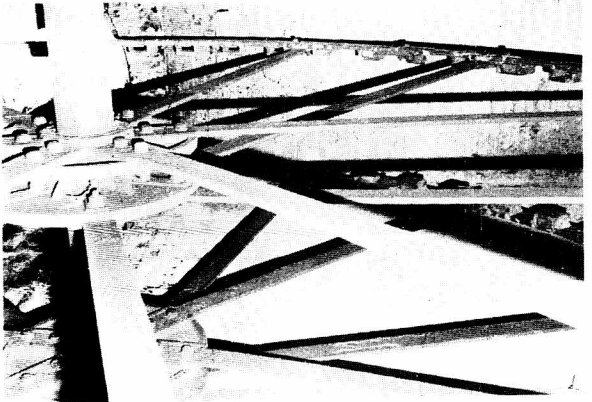
Sutton Mill (140)



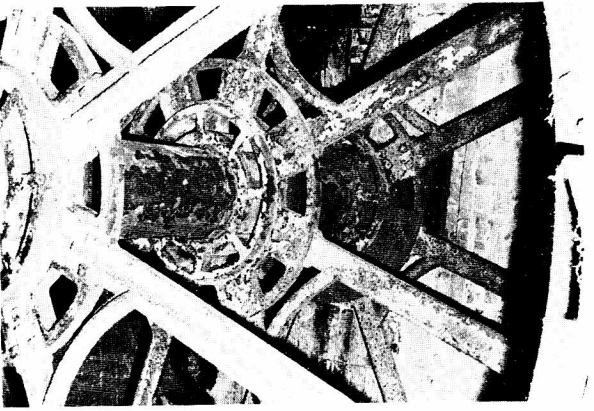
Cesters Over Mill (59)



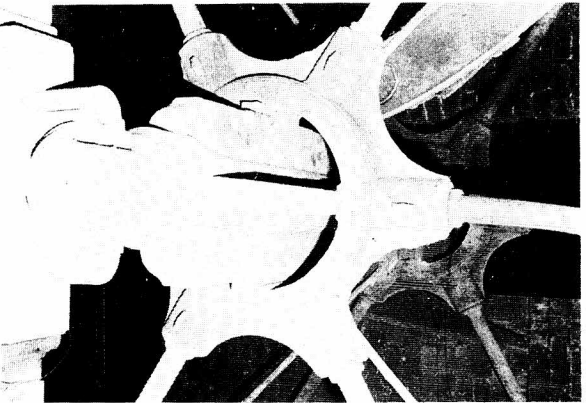
Weston Mill (143)



Charlecote Mill (52) - East Wheel



Rock Mills (49) - West Wheel



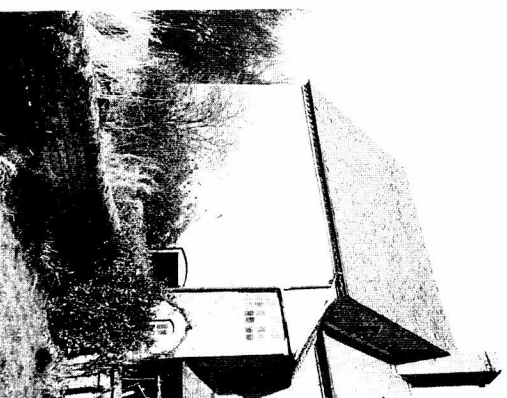
Mercote Mill (70)



Chesterion Mill (61)



Blackford Mill (4)

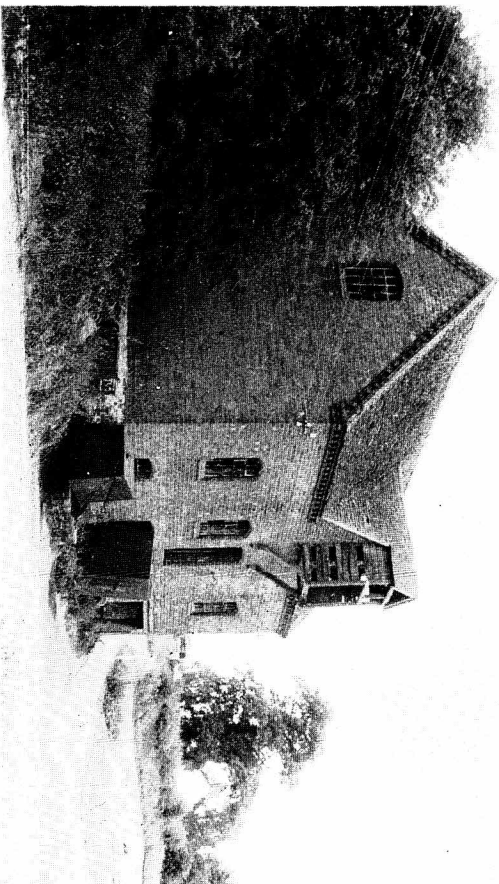


Wellesbourne Mill (91)

II

VII

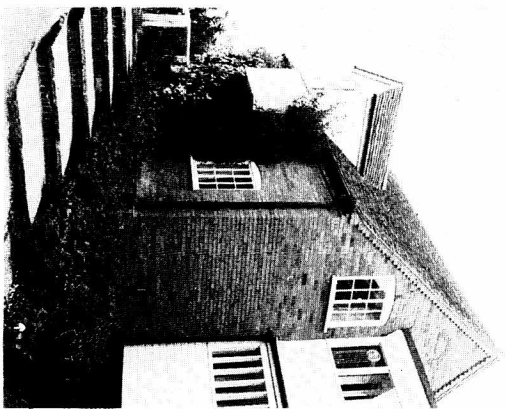
GEARING



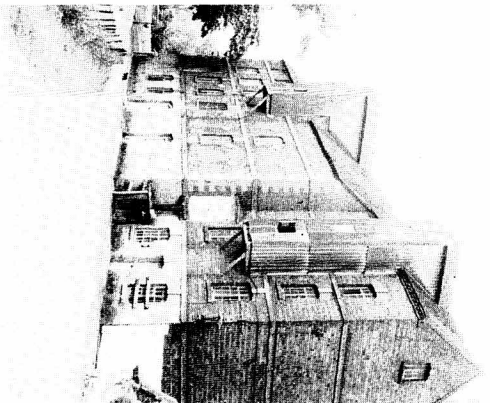
Mercote Mill (70)



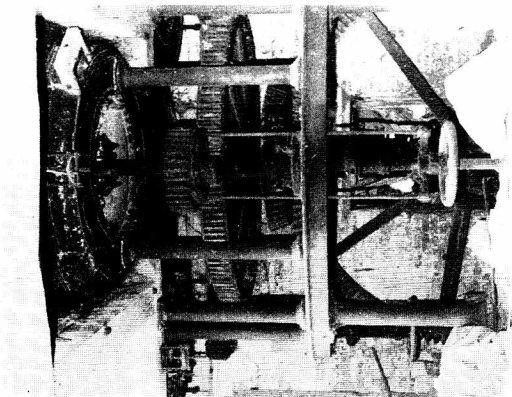
Long Compton Mill (156) - the wooden spur wheel and Stone nut



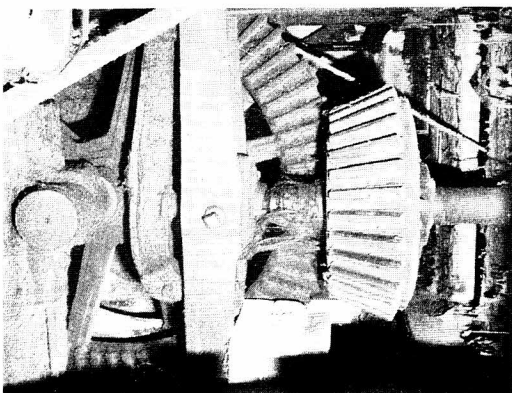
Tanworth Mill (1)



Rock Mills (49)

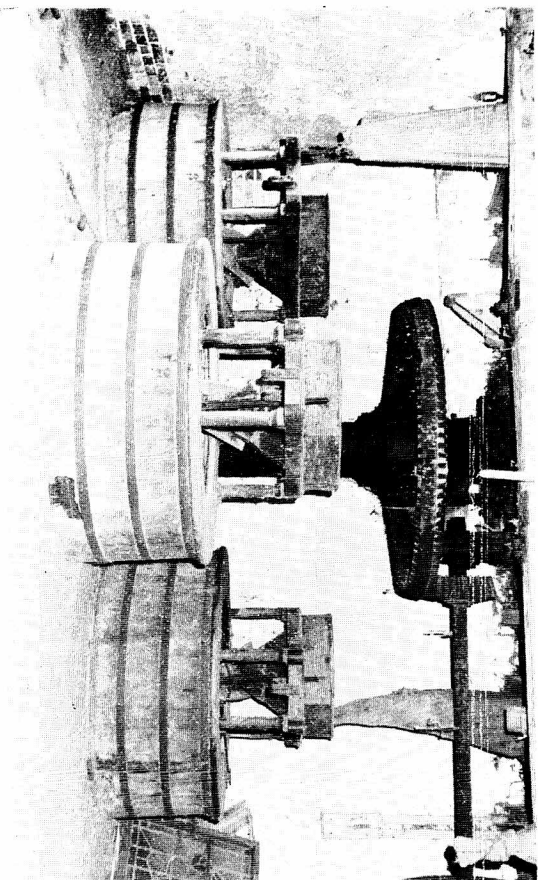


Blackford Mill (4) - the iron gearing with centre-lift tentering and disengagement by jack-ring

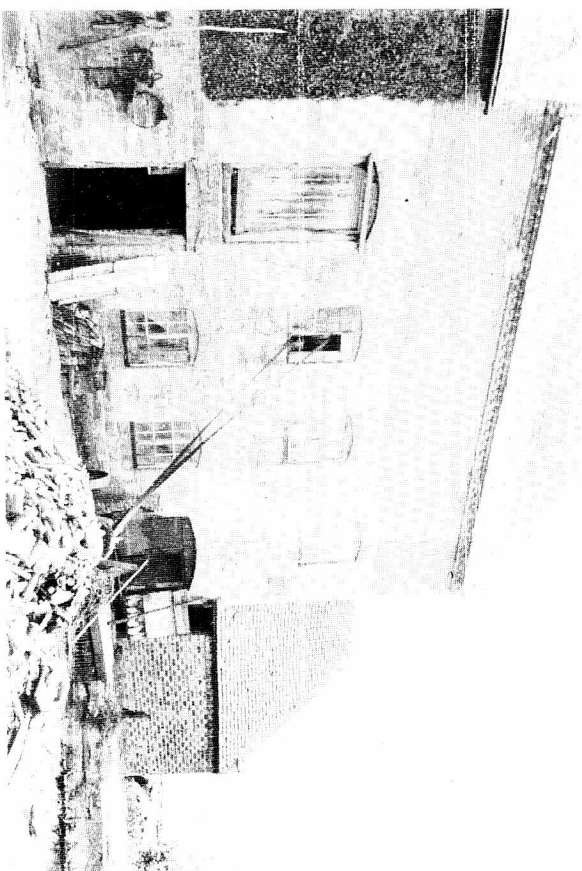


New Hall Mill (173) - the lineshaft gear with centre-lift tentering

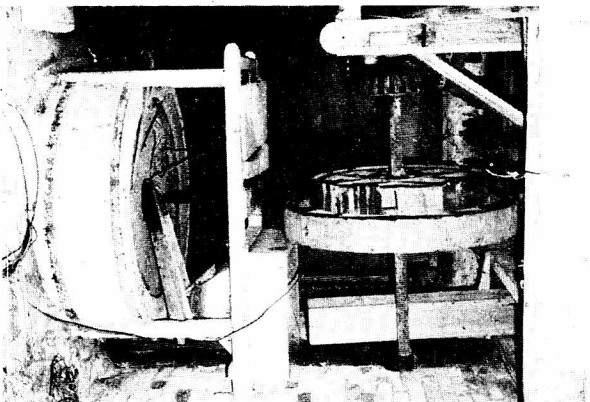
MILLSTONES AND AUXILIARY DRIVE



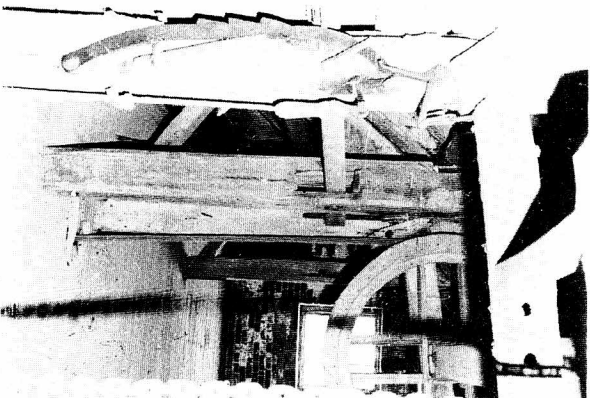
Blackford Mill (4)



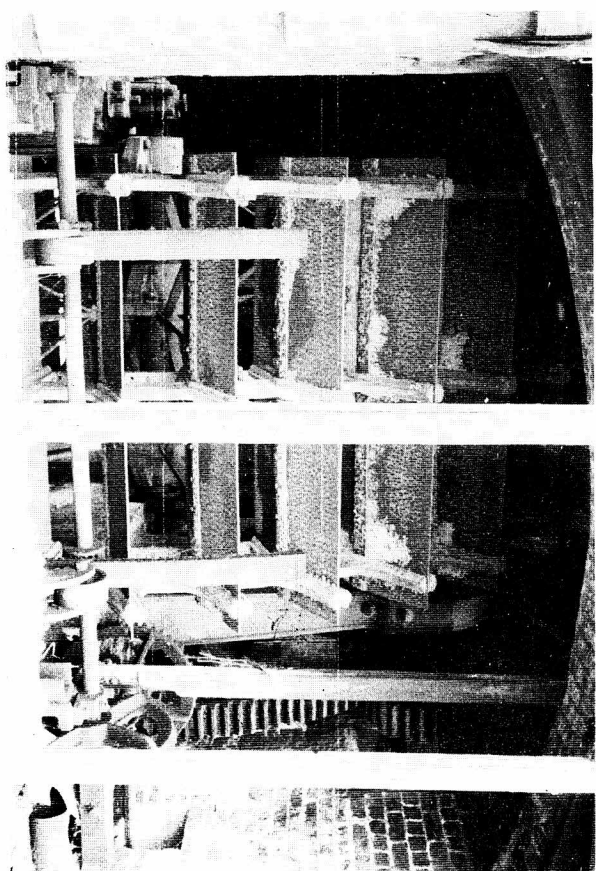
Hoo Mill (10)



Weston Mill (143)



Hoo Mill (10) - the automatic stop system on the hoist



Blyth End Mill (67) - the waterwheel and primary drive

IV

V